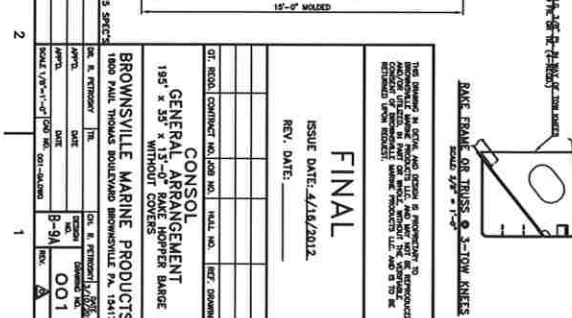
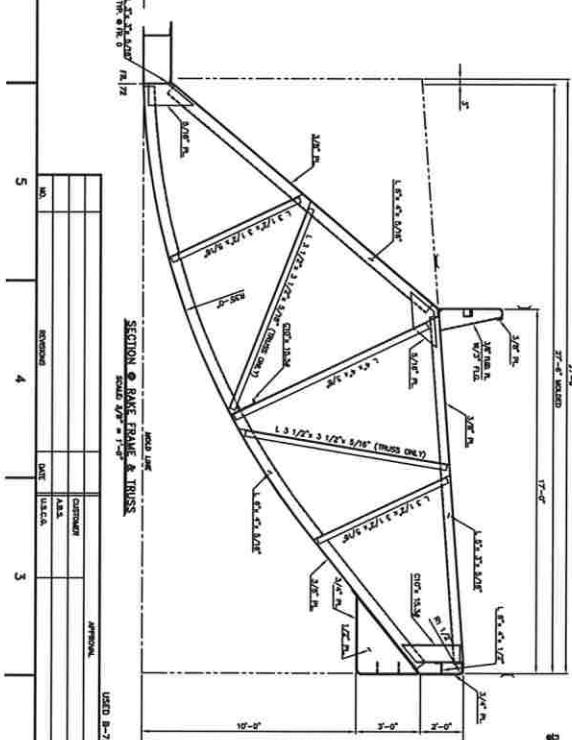
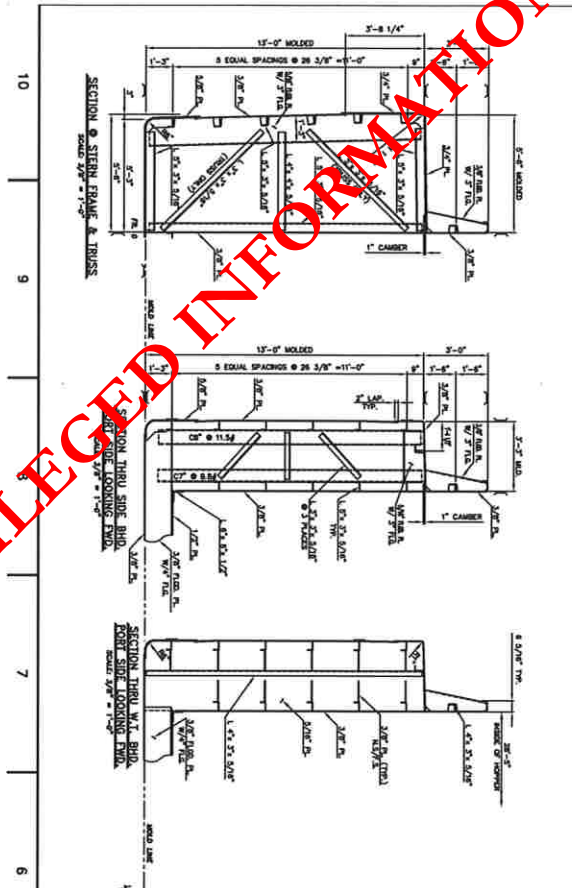
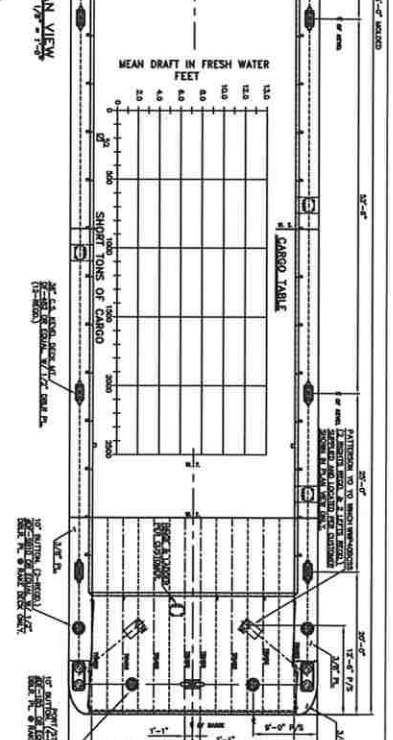
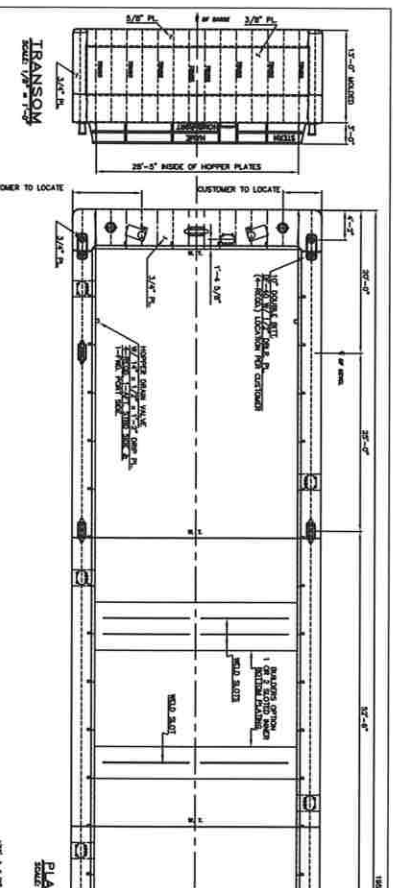
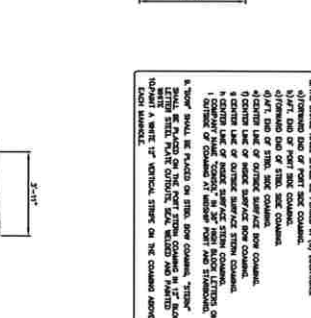
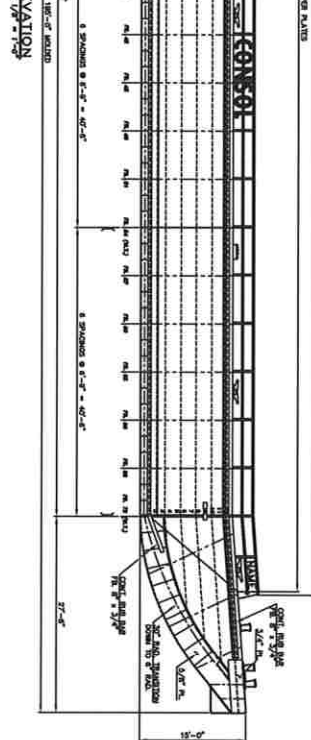
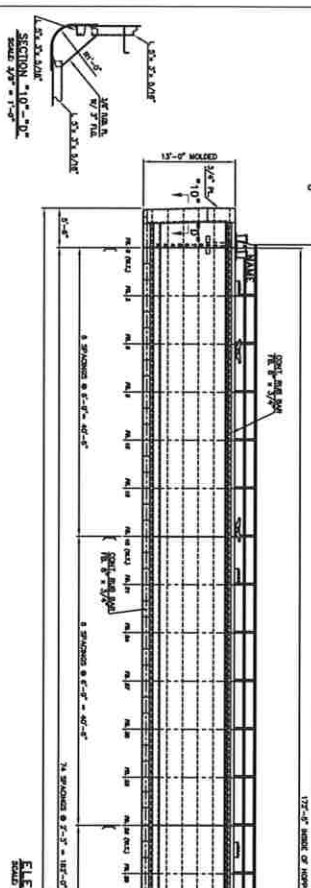


PRIVILEGED INFORMATION



NO.	REVISIONS	DATE	BY	CHKD.	APPR.
1					
2					
3					
4					
5					
6					
7					
8					
9					
10					



NO.	REVISIONS	DATE	BY	CHKD.	APPR.
1					
2					
3					
4					
5					
6					
7					
8					
9					
10					

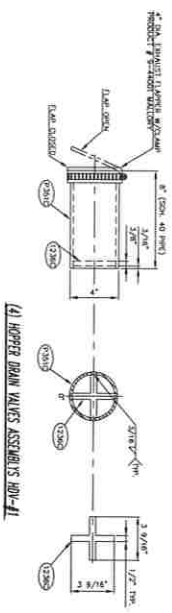
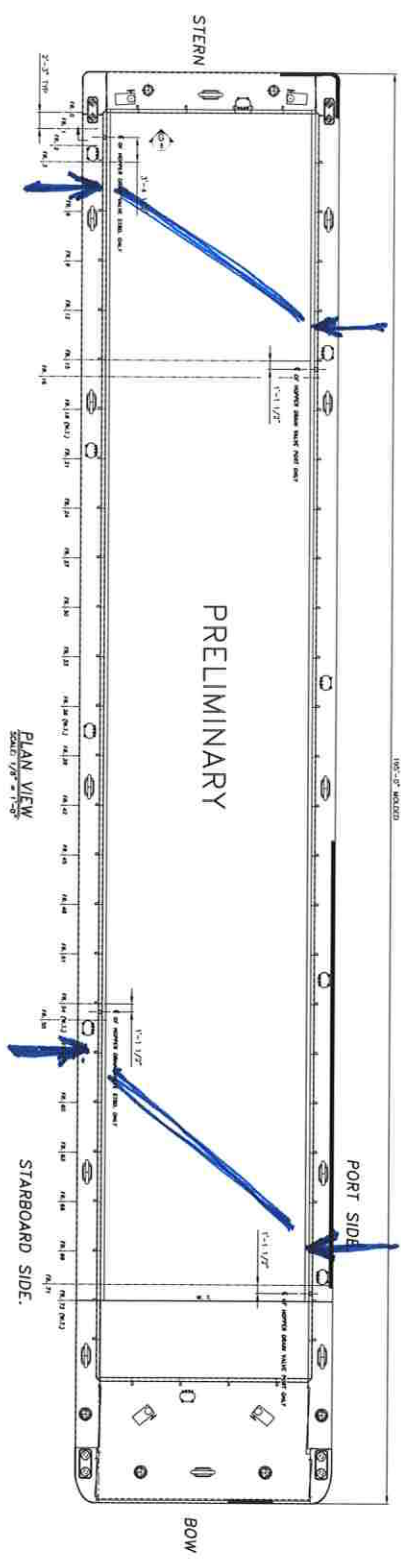
GENERAL NOTES:

1. HOPPER CAPACITY SHOWN AT TOP OF DRAWING IS APPROXIMATE.
2. ALL STEEL SHALL BE A36 UNLESS OTHERWISE SPECIFIED.
3. ALL WELDS SHALL BE E70XX UNLESS OTHERWISE SPECIFIED.
4. ALL STEEL SHALL BE GALVANNEAL UNLESS OTHERWISE SPECIFIED.
5. ALL DIMENSIONS UNLESS OTHERWISE SPECIFIED SHALL BE IN FEET AND INCHES.
6. ALL DIMENSIONS UNLESS OTHERWISE SPECIFIED SHALL BE IN FEET AND INCHES.
7. ALL DIMENSIONS UNLESS OTHERWISE SPECIFIED SHALL BE IN FEET AND INCHES.
8. ALL DIMENSIONS UNLESS OTHERWISE SPECIFIED SHALL BE IN FEET AND INCHES.
9. ALL DIMENSIONS UNLESS OTHERWISE SPECIFIED SHALL BE IN FEET AND INCHES.
10. ALL DIMENSIONS UNLESS OTHERWISE SPECIFIED SHALL BE IN FEET AND INCHES.

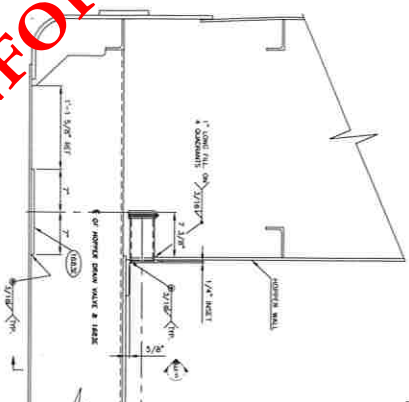
FINAL
 ISSUE DATE: 4/18/2012
 REV. DATE: _____

BROWNVILLE MARINE PRODUCTS
 1800 JAMES HARRISON BROWNSVILLE TX 77801
 (409) 833-1111
 WWW.BROWNSVILLEMARINE.COM

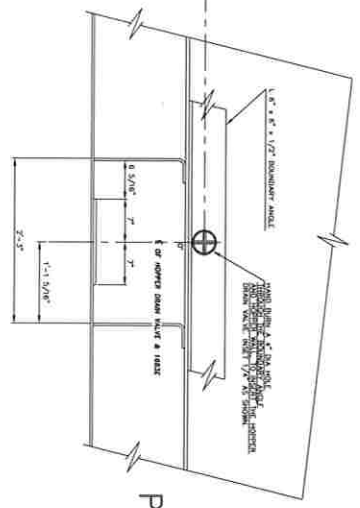
PRIVILEGED INFORMATION



PC MK	DESCRIPTION	QTY PER	WEIGHT	LOCATION
H0V-#1	HOPPER DRAIN VALVE	4	24	VALVE BODY
P-301C	3 1/2" DIA. x 0'-0"	4	8	SCREEN
9-4-4001	4" DIA. EXHAUST FLAPPER	4	4	FLAPPER
TOTAL		36#	0.02 S. TONS	
T-RK		37#	0.02 S. TONS	
WELD				
MISC.				
PLATE	PL-14" x 1/2" x 1'-2"	4	112	DRIP PLATE
TOTAL		112#	0.06 S. TONS	
WELD		114#	0.06 S. TONS	



SECTION "C"- "8"



SECTION "E"- "5"

PRELIMINARY

PRELIMINARY

ISSUE DATE: 2/13/2012
REV. DATE:

NO.	REVISED	DATE	BY	CHKD.	APPROVED

BROWNVILLE MARINE PRODUCTS
 1800 PAUL THOMAS BOULEVARD BROWNVILLE PA 15417
 TEL: 717-825-1200 FAX: 717-825-1201
 WWW.BROWNVILLEMARINE.COM
 HOPPER DRAIN VALVE DETAILS
 195" x 35" x 13'-0" RAKE HOPPER BARGE
 WITHOUT COVERS

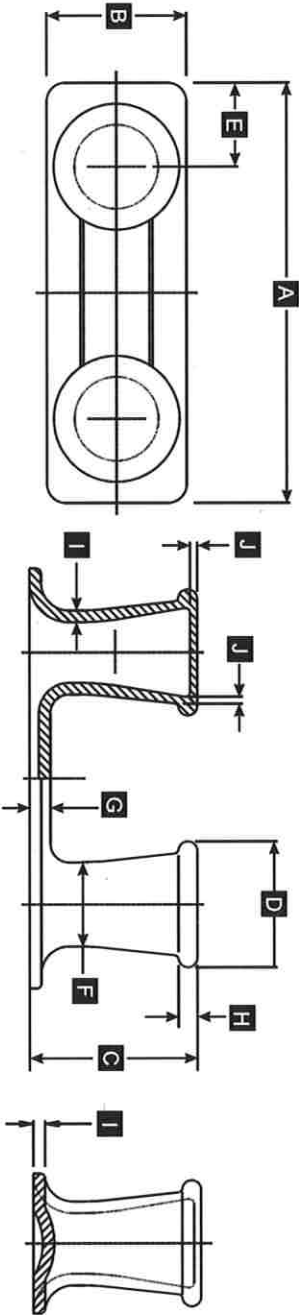
10 9 8 7 6 5 4 3 2 1

A B C D E F G



Universal Motion Components
Marine Hardware Division

Double Bits ASTM A27-70-36 Cast Steel



MODEL	DESCRIPTION	PART #	DIMENSIONS IN INCHES (MM)										LBS (KGS)
			A	B	C	D	E	F	G	H	I	J	
UMC-2	DOUBLE BITT 8"	01110-301A	40" (1016)	14" (336)	16" (406)	11" Ø (279)	8" (203)	7" Ø (177)	2" (51)	2" (51)	1.25" (32)	.72" (18)	320 (145)
UMC-40	DOUBLE BITT 10"	01120-301A	45" (1143)	15" (381)	18" (457)	13.5" Ø (343)	9" (228)	9" Ø (228)	2.25" (57)	2" (51)	1.25" (32)	.75" R (19)	574 (260)



PRIVILEGED INFORMATION

RYAN CLINKER BEAD
714 437-9600

